

# GPS BABEL Manual

## 1 Introduction

GPSBabel converts waypoints, tracks, and routes between GPS receivers and mapping programs. It returns to us the ability to freely move our own waypoint data between the programs and hardware we choose to use.

GPSBabel is Free Software. You are free to use it within terms of the [GNU Public License](#)

Download it from: <http://www.gpsbabel.org/download.html>

## 2 Getting started with GPS Babel

### 2.1 Connect the device to the computer

- Connect the device to the computer through the USB connector port at the back of the GPS unit (under the weather cap)
- Turn on the GPS unit



*Connecting the GPS unit to the computer*

Next step is to transfer the data from the GPS unit onto a computer with GPS Babel.

### 2.2 Transfer data from the device to the computer

To download waypoints, tracks and routes from the GPS unit to your computer you need to:

- *Open GPS Babel*

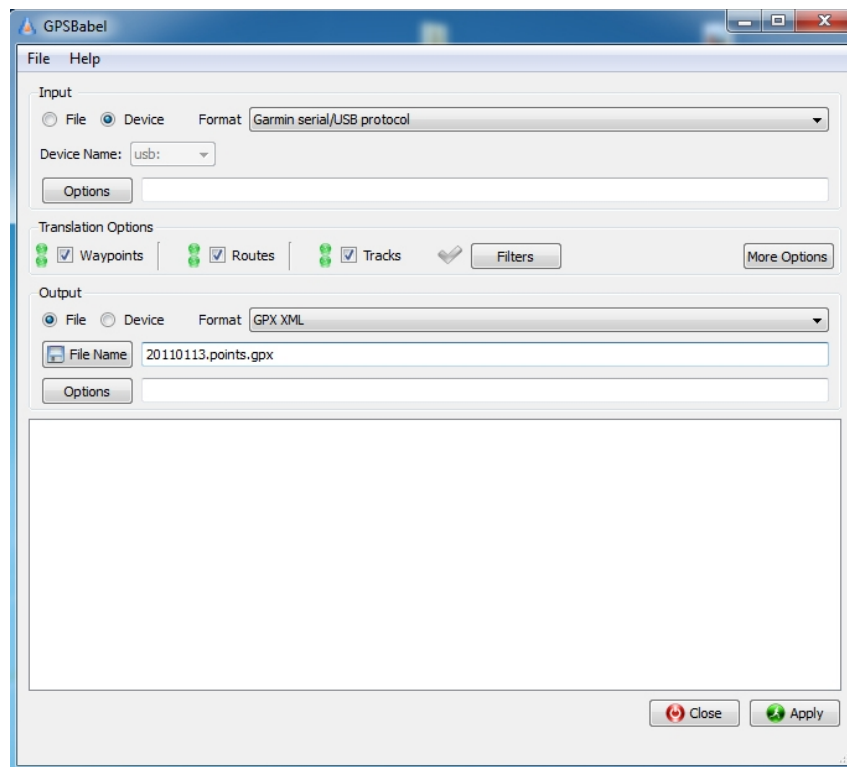
The following values should be in the field:

- *Input* > *Garmin serial/USB protocol*
- *Translation Options* > make sure the *Waypoints, Routes, and Tracks* are checked
- *Output* > *File* > *GPX XML*

**GPX**, or **GPS exchange format**, is an XML file format for storing coordinate data. It can store waypoints, tracks, and routes in a way that is easy to process and convert to other forms. All GPS data used by OpenStreetMap is converted to GPX format before it can be uploaded.

- *File Name* > type in the file name you wish and add an extension *.gpx* (example: Nairobi\_20062011.gpx)

The file is copied into the same folder as the GPS Babel.



*GPS Babel Setup*